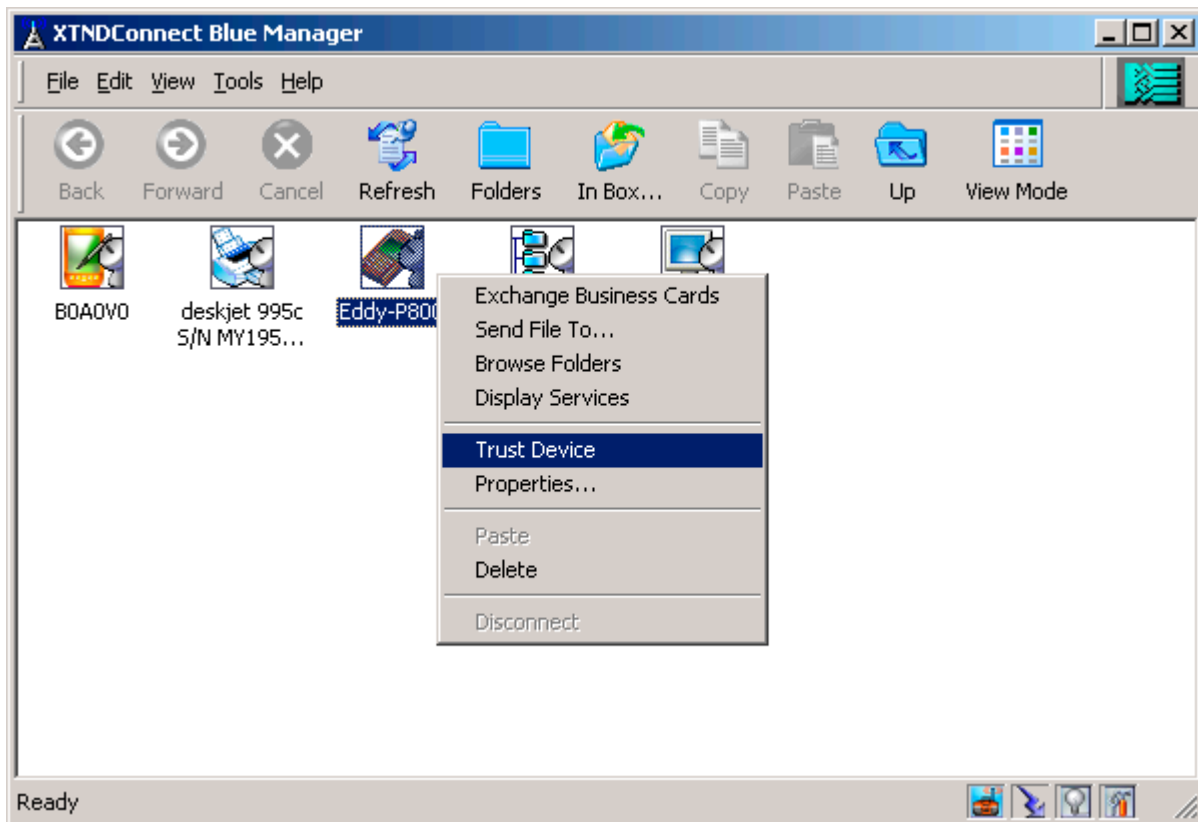


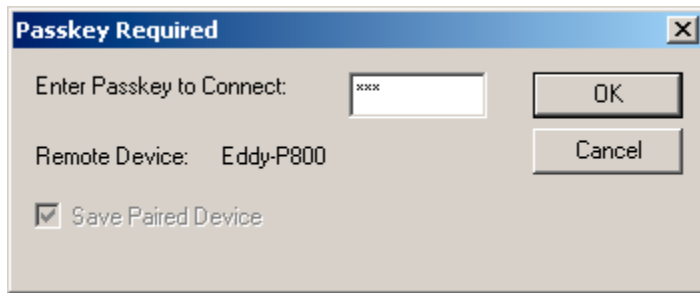
## SonyEricsson P800 Bluetooth Cell phone with Blue Manager

This topic will talk about how the SonyEricsson P800 Bluetooth Cell phone work with Blue Manager.

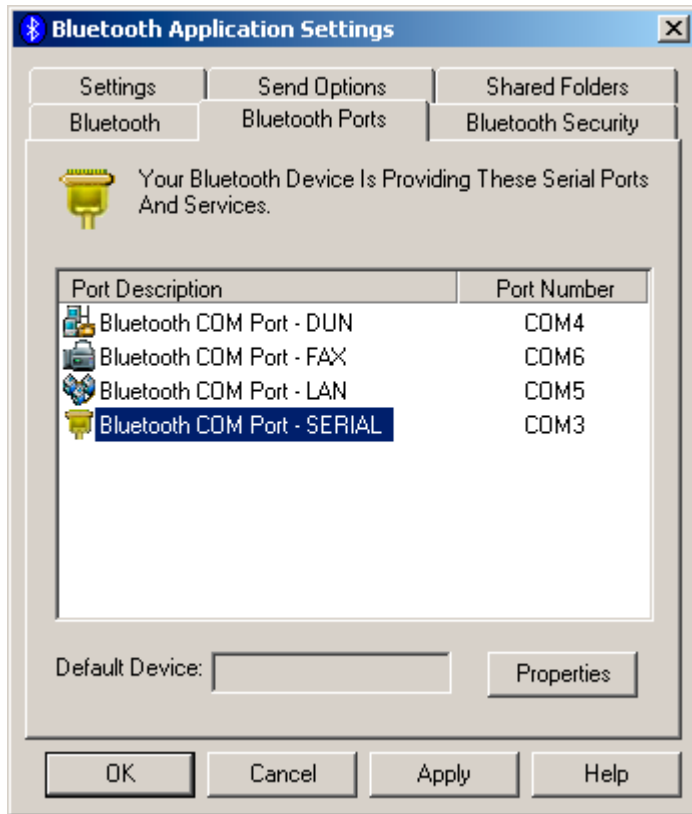
1. Please install PCSuiteForP800\_rel\_1.5.1\_EN into computer system;
2. Install Blue Manager into computer system;
3. Set P800 as discoverable mode so that this bluetooth device can be found by other bluetooth devices;
4. Run Blue Manager and the P800 can be found, see picture below:



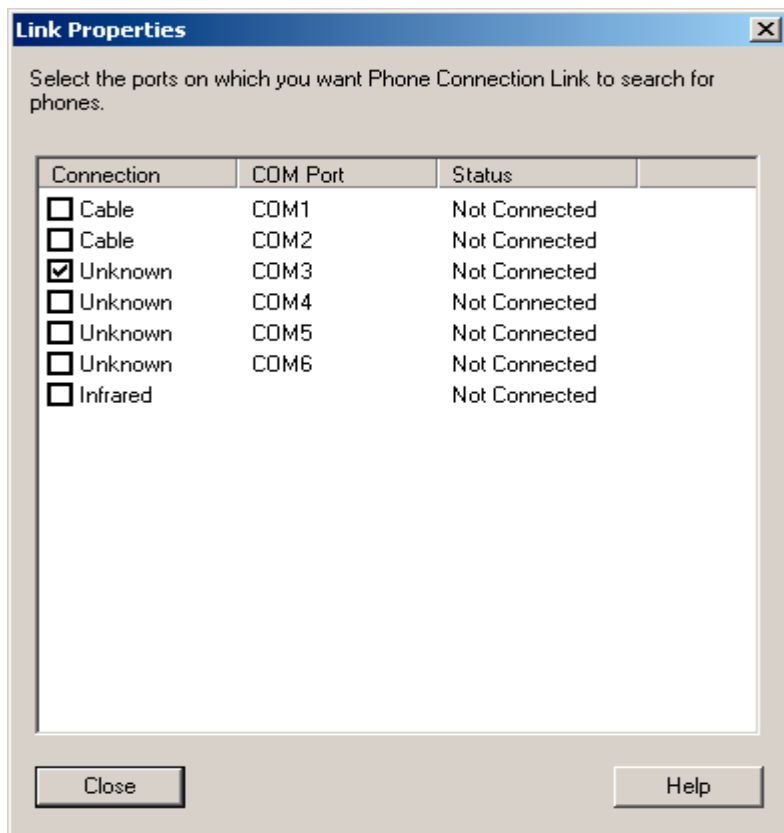
5. Since this phone is in discoverable mode, so it is found by Blue Manager, next step is pair the device, as the picture shown above, right click the device icon, select Trust Device, there will another window jump out to input passkey, see picture below:



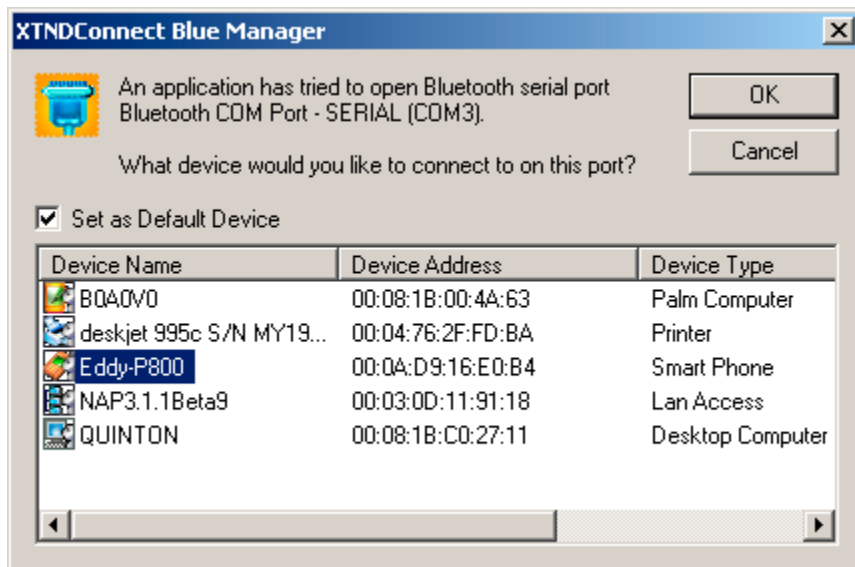
6. Input passkey here, remember this is not a specific passkey, end user can input any passkey as they want in both sides, for example if 1111 is input in the Blue Manager side, please input same passkey in the P800 side;
7. Go to check the virtual serial port made by Blue Manager in your computer side, just click the menu Tool→Options→Bluetooth Ports to check, here the Serial port will be used, remember the number:



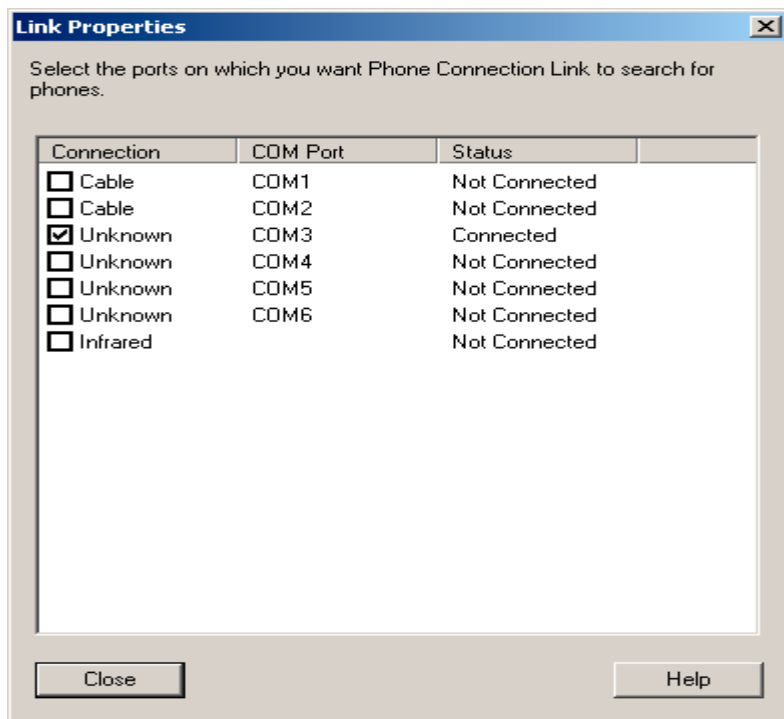
8. From the picture above, we can see that COM3 will be used to communicate with P800;
9. Open the software PCSuiteForP800, a window Link Properties will display, select the right COM port:



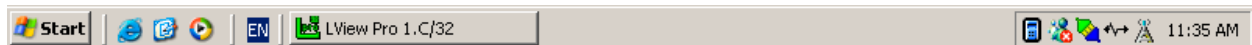
10. After selecting the right COM port, Blue Manage will show one window for user to select device, just select the P800 device:



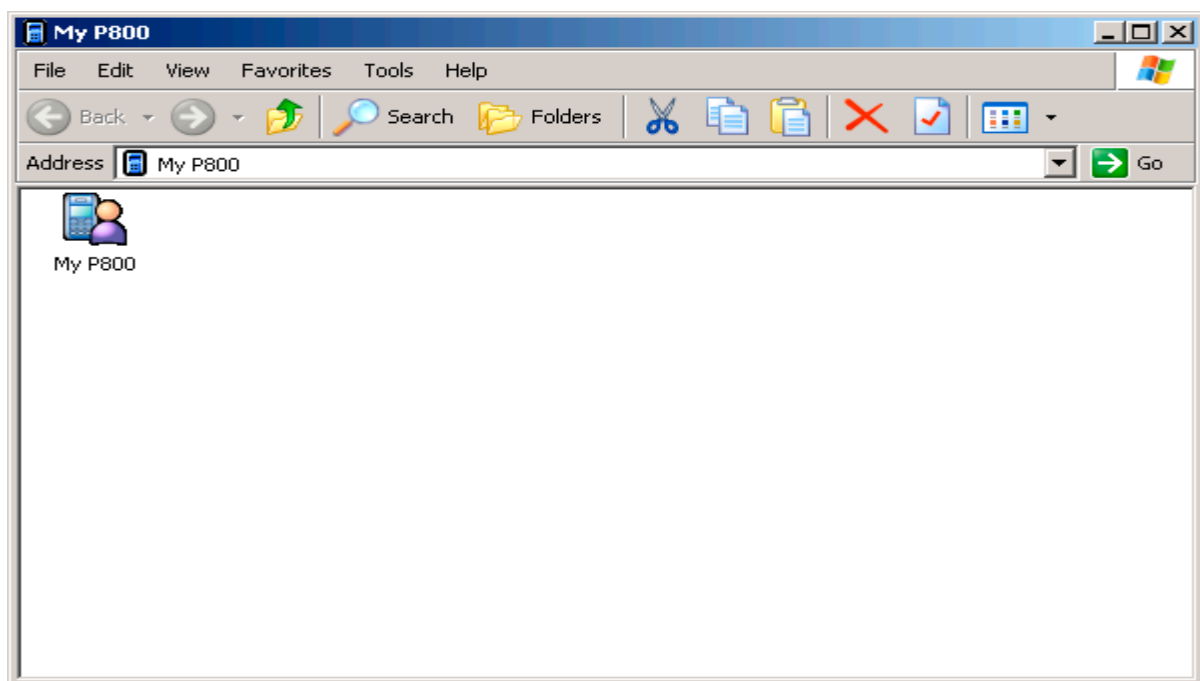
11. Then the Link Properties Windows will show the COM port is connected:

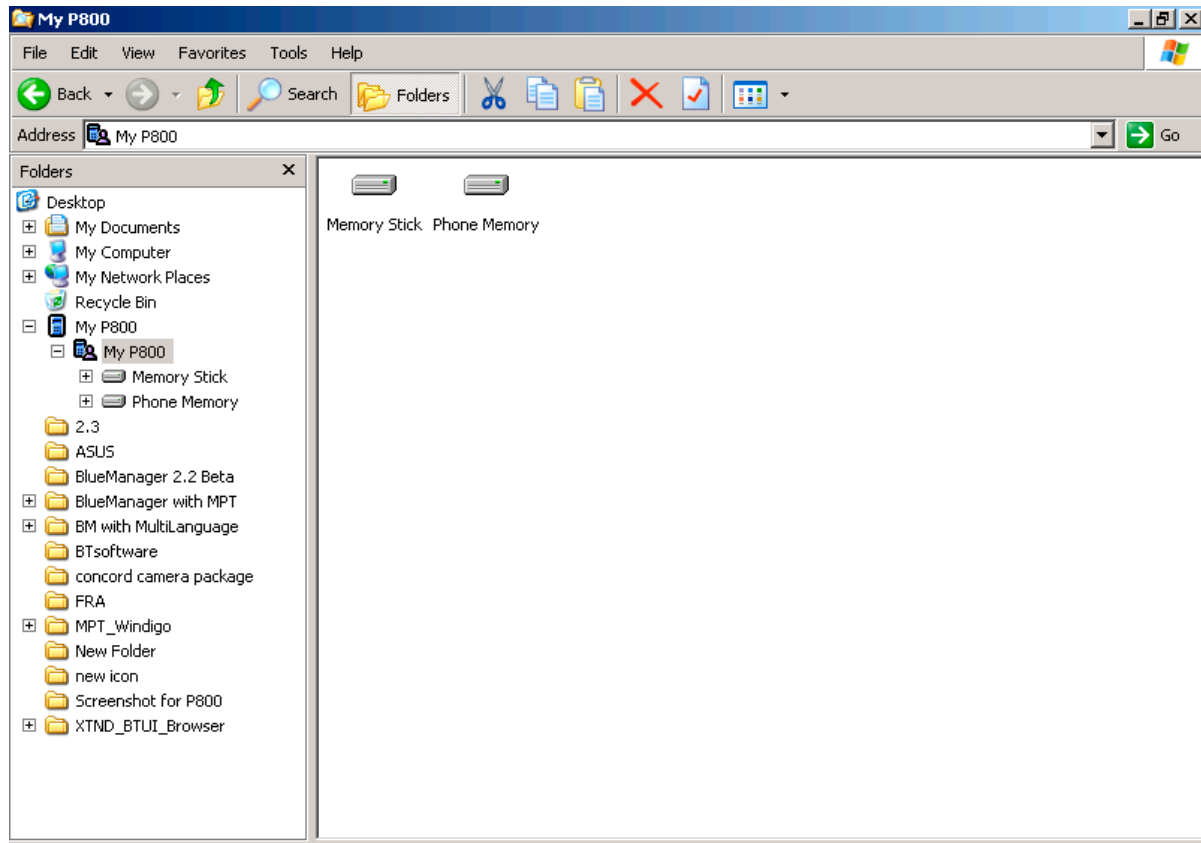


12. And from the system tray, the connection icon also will show the connection:



13. Run the PCSuite application, you can see P800 is connected to the computer system:





**Till here, the bluetooth cell phone P800 is connected to the computer system which has Blue Manager.**